

ENERGY BARGE

Newsletter #22



Source: Hafen Straubing-Sand

Welcome to the 22nd newsletter of the ENERGY BARGE project!

In the course of the project, our partners from the logistics sector compiled pre-feasibility studies to define development plans and investment needs to strengthen Danube ports as logistics hubs for the bioenergy sector. In this issue, the analysis conducted by the Port of Straubing to provide additional storage space for biobased feedstocks and products is summarised.

Further, we would like to kindly invite you to register for the final ENERGY BARGE B2B matchmaking event on 20 March 2019 in Straubing, Germany. External participants are also highly welcome to join the workshop on potentials for the biobased economy in the Danube region in combination with three site visits in the region of Straubing on 19 March.

We hope you enjoy reading!

The team of ENERGY BARGE



The partners

There are 15 partners involved in the project from 7 countries:

7 partners from the biomass/bioenergy sector

6 partners from the logistics sector including 5 ports

3 partners from the field of research that provide either special knowledge needed for the implementation of the project (spatial modelling) or who have special knowledge and networks in their regions (biofuels and biomass).



Assessing storage options for wood biomass in the Port of Straubing

Straubing's multimodal port was established in 1996, which makes it the youngest Danube port in Bavaria. It offers well-established infrastructural connections and has vast experience in handling of biomass cargo with a current focus on bulk goods for the bioenergy and agriculture sectors. An average of 3.7 million tonnes of goods are handled in the tri-modal port (water, road, rail) annually. About a fifth thereof is transhipped via inland waterway transport. Between 80 and 90% of the cargo handled has been biomass in the form of input feedstock for biofuel generation.

The conducted pre-feasibility study aimed to investigate and analyse options to improve the capacities of the Port of Straubing as a logistics hub for biomass handling. After assessing a set of three pre-defined development options, ranking of factors of importance and discussions with industrial stakeholders, the subject of the study was laid on a preliminary analysis of options to develop additional storage space for biobased feedstocks and products. This was deemed as a prerequisite to serve the needs of current and future potential customers of services offered in the port by both the port management itself and the private logistics companies operating based on the port's infra- and superstructure. The primary focus was on open-air storage for wood biomass feedstock and products.



The port capacity of 500,000 t/a for waterside transhipment has been exceeded by 100,000 – 300,000 t/a in the recent years. Of the 220 ha of property to be settled in the port and greater port area (industrial park), some 40 ha are still available to be settled, however, scattered into several plots with few 'class 1' plots left. The port basin is fully settled. As a result of the study, options for additional storage would have to be developed in line with a general extension of the port area and in close relation to the port's business model.

The port management, in cooperation with municipal and regional politics, strives to develop the port and its industrial area in line with the remaining region to become a model region for renewable raw materials and sustainable bioeconomy. The port's role in this development is the provision of attractive site advantages for bioeconomy companies to settle in the region. Most important factors in this regard are availability of suitable and flexible settlement infrastructure including competitive utilities (steam, heat) as well as flexible inbound and outbound logistics options for both biobased feedstock and products/intermediates.

The full study can be accessed via this [link](#).

Bioeconomy in the Danube region – ENERGY BARGE workshop & site visits

On **19 March 2019**, the ENERGY BARGE project organises a workshop on the biobased economy in the Danube region in combination with three site visits to Straubing, the “Region of Renewable Raw Materials”.

From 09:30-12:30 a thematic workshop on the Danube region and its potential for the biobased economy and energy will be held. During the afternoon session from 13:30-16:30, participants are invited to join the site visits to the Clariant sunliquid demoplant, a tour to the Port of Straubing and the KoNaRo Center of Excellence for Renewable Raw Materials.

External participants are highly welcome, but participant number is limited. Participation is free of charge. Please contact ann-kathrin.kaufmann@biocampus-straubing.de for further information and registration.



Programme

Workshop & site visit
Duration: 9.30 – 16.30
Hafen Straubing
Europaring 4, Gründerzentrum
94315 Straubing

- 9:00 Registration & business breakfast**
- 9:30 Opening – Workshop & site visit objectives**
(Andreas Löffert, CEO Hafen-Straubing)
- 9:40 ENERGY BARGE - Building a green energy & logistics belt**
(Thies Fellenberg, Agency for Renewable Resources / FNR)
- 9:50 Key Note: Bioeconomy in Bavaria – Potentials and outlook**
(Benjamin Nummert, Head of Office, Bioeconomy Council Bavaria)
- 10:15 Coffee Break**
- 10:30 Biobased economy: An idea with profile for rural areas and inland ports; example Straubing, Region of Renewable Raw Materials**
(Andreas Löffert, CEO Zweckverband Hafen Straubing-Sand)
- 10:50 Power-to-gas – Decentral solutions and perspectives for the Danube region**
(Prof. Dr. Raimund Brotsack, CEO micropyros GmbH)
- 11:15 Strengthening business cooperation and know-how in the biomass and bioenergy sector – Workshop ENERGY BARGE modal shift platform**
(Ann-Kathrin Kaufmann, BioCampus Straubing GmbH, Prof. Dr. Wolfgang Dörner, Technologiecampus Freyung)
- 12:15 Moderated discussion**
- 12:30 Lunch break**
- SITE VISITS – Shuttle provided**
- 13:30 Clariant sunliquid demoplant, BioCampus Straubing**
- 14:30 Tour through Port of Straubing, info on ADM oilseed mill**
- 15:15 KoNaRo KoNaRo Center of Excellence for Renewable Raw Materials**
(Sabine Gmeinwieser, KoNaRo)
- 16:30 End**

Danube logistics meet growing markets: B2B forum for biomass and high & heavy cargo

Be it agricultural and forestry goods from raw material to finished products or heavy devices, building components or machinery: Waterway transport offers tailored logistics solutions and new perspectives for logistics-intensive markets.

Join us in scanning latest trends in these sectors and connecting with fellow business actors in brief business-to-business meetings:

„Danube logistics meets growing markets: B2B forum for biomass and high & heavy cargo“

20 March 2019, 9:00-16:30

Sennebogen Academy, Sennebogenstraße 8, Port of Straubing



The international event is organised by the Port of Straubing and the BioCampus Straubing GmbH in close cooperation with the ENERGY BARGE project. The event is supported by the Chamber of Commerce of Lower Bavaria, Port of Rotterdam and Sennebogen Maschinenfabrik GmbH.

In two parallel sessions, experts from both the cargo owner and the logistics service provider side will discuss potentials and challenges of inland waterway transport as a transport mode for the two focus markets **„Biomass, bioenergy and agro- and forestry goods“** and **„High & Heavy and project cargo“**.

Focal point of the event's second part will be your own business: book bilateral business-to-business (B2B) meetings with potential business partners, clients, forwarders or multimodal logistics service providers. In 15-minute slots with speed-dating character, you get the exclusive chance to arrange first contacts or to deepen business relations.

[Register here](#) via the event website. Here, you also find the agenda as well as all accompanying information. Once the B2B matchmaking booking is opened, you will be notified.

Participation is free of charge, however registration is obligatory. We kindly ask for your registration via the website. Participant numbers are limited, registrations are handled on „first come, first serve“ basis.

We look forward to welcoming you in Straubing!

Info brochure Modal Shift Platform

The [ENERGY BARGE modal shift platform](#) aims to enable a better connected and interoperable environmentally-friendly transport system for bioenergy products along the Danube.

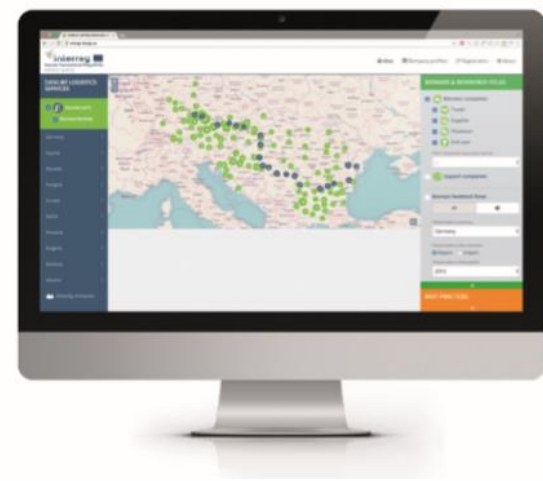
The tool supports the provision of expertise on the transport, handling and storage of biomass to bioenergy actors. More than 680 companies from the biomass and Danube logistics sectors are already registered on the platform.

The info brochure about the online tool is available in various languages now. Get your digital version [here](#).

INFO BROCHURE



**Building a Green Energy
and Logistics Belt**



Follow us on Social Media:



Twitter: [@Energy Barge](#)

Facebook: www.facebook.com/energybarge

Contact :

Thies Fellenberg
Agency for Renewable Resources (FNR)
t.fellenberg@fnr.de
(Project Coordinator)

www.interreg-danube.eu/energy-barge



Interreg



**Danube Transnational Programme
ENERGY BARGE**

Building a Green Energy & Logistics Belt

ENERGY BARGE is co-funded
by the European Regional Development Fund (ERDF)

If you are interested to receive the ENERGY BARGE newsletter regularly, please subscribe on our project website: www.interreg-danube.eu/energy-barge