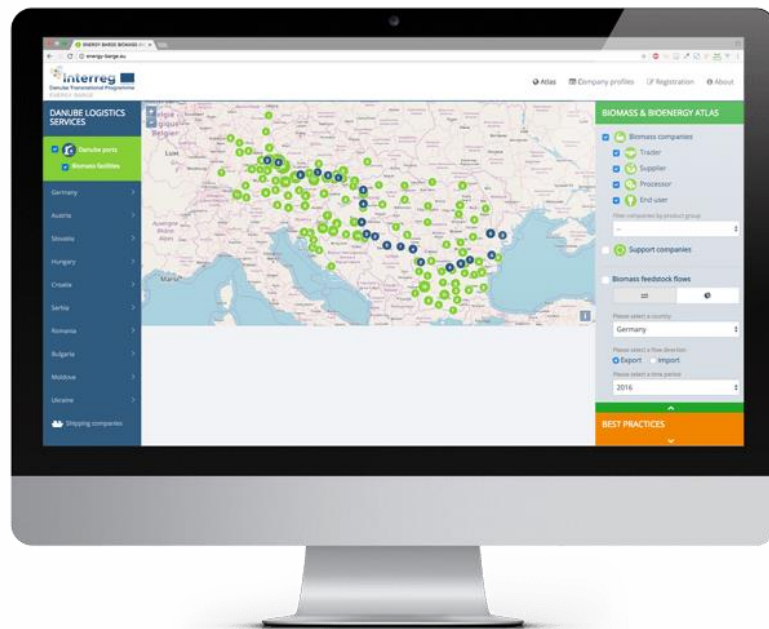


# ENERGY BARGE

## Newsletter #15



The **modal shift platform** of the ENERGY BARGE project has been launched!

In the 15<sup>th</sup> issue of the project's newsletter, the modal shift platform, which merges the so-called biomass & bioenergy atlas and the platform for green bioenergy logistics along the Danube is presented.

The online tool provides information about the company landscape, business contacts and biomass feedstock flows in the Danube region. Hereby, cross-sectoral and cross-border cooperation of the biomass and the Danube logistics sector shall be fostered. Companies are invited to register and join the platform to build up a bioenergy and logistics network along the Danube.

Further, we look back on the first ENERGY BARGE business-to-business meeting in Vienna.

We hope you enjoy reading!  
The team of ENERGY BARGE



## The partners

There are 15 partners involved in the project from 7 countries:

7 partners from the biomass/bioenergy sector

6 partners from the logistics sector including 5 ports

3 partners from the field of research that provide either special knowledge needed for the implementation of the project (spatial modelling) or who have special knowledge and networks in their regions (biofuels and biomass).



# Launch of the modal shift platform – [www.energy-barge.eu](http://www.energy-barge.eu)

The ENERGY BARGE modal shift platform (Figure 1) provides an intuitive and easily navigable overview on the transnational biomass and bioenergy market as well as practical guidance and business contacts for green bioenergy logistics along the Danube. It includes the company landscape and related business contacts, land cover aspects and biomass feedstock trade flows between countries in the Danube region.

The online tool comprises a comprehensive set of company entries. Currently, the data base contains more than 530 companies from the biomass and bioenergy sector, 66 Danube ports and over 50 shipping companies and ship brokers. Furthermore, 40 clusters and (research) institutions are listed. The data base of market actors allows for growth and development through the option for companies to register and to consequently provide a growing transnational character. Companies that are presented on the platform have the opportunity to connect with other key actors of the Danube logistics sector and stakeholders from the bioenergy and biomass industry to foster collaboration and to establish new business contacts.

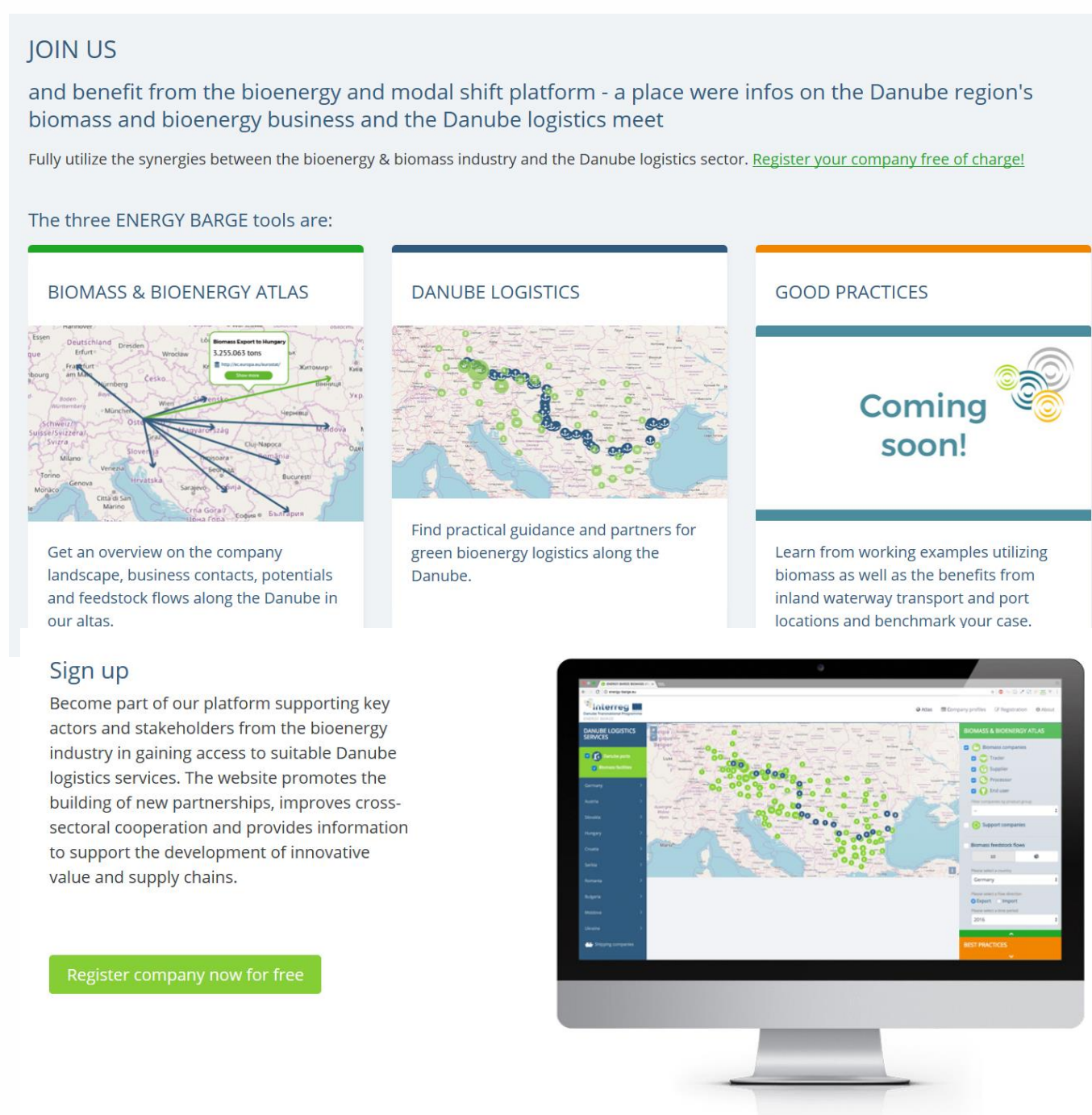


Figure 1: Landing page of the modal shift platform.



The modal shift platform aims to enable a better connected and interoperable environmentally-friendly transport system for bioenergy products along the Danube. The online tool supports the provision of expertise on the transport, handling and storage of biomass to bioenergy actors. It addresses market actors from the bioenergy and the Danube logistic sectors. For an improved supply and transport of biomass and bioenergy products it offers the following functions:

1. Transnational overview on market actors along the biomass supply chains and logistics in Danube-adjacent countries to find suitable business partners to improve value and supply chains with specific visualisation and search functions (Figure 2);
2. Easy access to portfolio of Danube logistics and suitability for transport of different biomass products with specific zooming options and spatial identification of ports;
3. Overview of support institutions such as clusters and research institutions to foster aspects of biomass sustainability and cooperation;

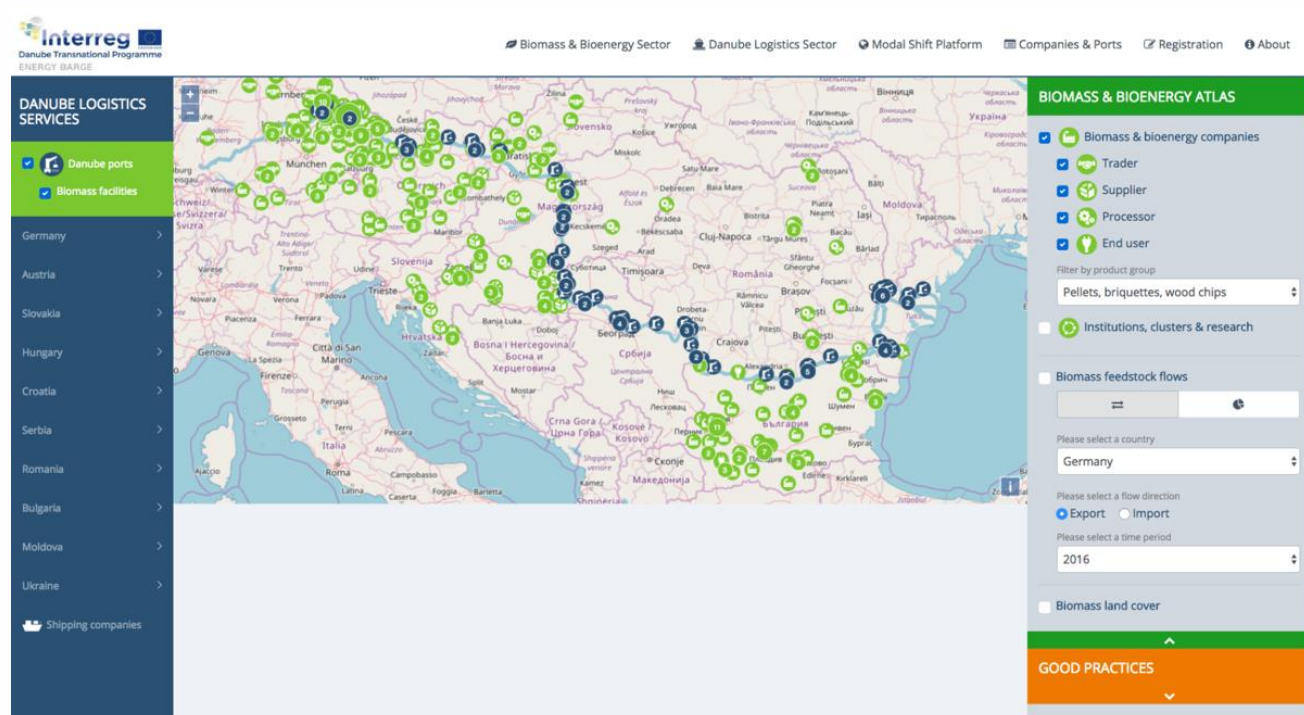


Figure 2: Map view, minimum zoom, Danube ports with biomass facilities and biomass and bioenergy companies covering all company types selected (product group “pellets”).

4. Option to actively register as a company from the Danube region in either the Danube logistics or the biomass and bioenergy sector and update company data;
5. Dynamic visualisation of biomass trade flows;
6. Background information on the project’s thematic reports;
7. Access to the modal shift handbook for shifting biomass transports to inland waterways.

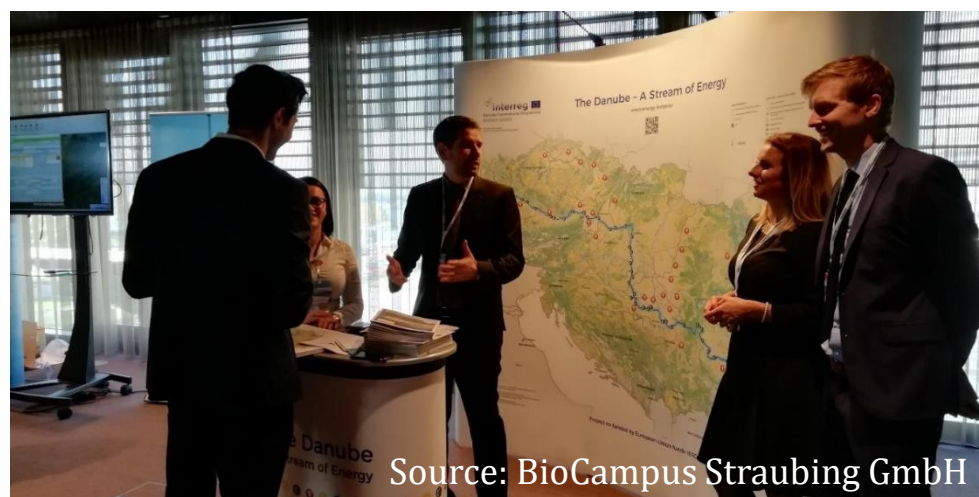
Soon, the platform will also feature a good practices section providing insight into factors shaping the performance of bioenergy actors already using or aiming to use inland waterway transport.

The modal shift platform can be accessed via the link [www.energy-barge.eu](http://www.energy-barge.eu).

## The Danube – A Stream of Energy

The Danube – A Stream of Energy: This was the motto of the two-day Danube Business Talks 2018, organised by the ENERGY BARGE partners viadonau and Port of Vienna in Vienna.

On the first day full of political topics on the role of the Danube as a logistical and touristic axis in Europe, a so called Draft Findings Paper and declarations of the European Barge Union, European Skippers Organisation, Pro Danube International and Pro Danube Austria were handed over to Austria's Minister of Transport, Norbert Hofer, and the representative of the European Commission, Désirée Oen. Austria is currently having the chair at the EU transport ministers round due to the Austrian EU presidency. A joint port tour organised by the ENERGY BARGE partner Port of Vienna including a dinner cruise concluded the first day.



Source: BioCampus Straubing GmbH

The second day focussed on new business relations. In four expert presentations, the companies Agrana, Münzer, Bulmarket and Port of Rotterdam presented their biobased energy businesses as well as their logistics systems. The key message was: if we take the Paris agreement and European climate goals seriously, bioenergy and biobased economy will have to play a decisive role. To this end, political actions such as a CO<sub>2</sub> tax could be suitable measures.

For bigger processing sites, functioning logistics are of predominant importance. For Agrana, Münzer and Bulmarket, the Danube already is an important logistics backbone for feedstock and for products. But only if the Danube logistics services are accessible all year round, the supply can be guaranteed. Here, the speakers identified clear challenges. After a brief panel round, the audience moved to the ENERGY BARGE B2B matchmaking event organised by viadonau. Scheduled in advance via an online tool, actors along the supply chains could book brief 15-minute business dates with potential partners of interest to facilitate first contacts.



Source: BioCampus Straubing GmbH



## Get to know the ENERGY BARGE partners!



The Technology Center Sofia (TCS), founded in 2010, is a Bulgarian competence center for biomass. The main objective of TCS is to promote and support the development of an innovation network, assist young entrepreneurs and to function as business incubator. In addition, competence centers for energy efficiency, tourism and metal are associated to TCS.

TCS organises the exchange of experiences and innovation between science and industry, among foreign and Bulgarian companies and promotes long-term partnerships between stakeholders in research, business and education.

Follow us on Social Media:



Twitter: [@Energy\\_Barge](#)

LinkedIn: [Energy Barge](#)

Facebook: [www.facebook.com/energybarge](http://www.facebook.com/energybarge)

### Contact:

Thies Fellenberg  
Agency for Renewable Resources  
[t.fellenberg@fnr.de](mailto:t.fellenberg@fnr.de)  
(Project Coordinator)

[www.interreg-danube.eu/energy-barge](http://www.interreg-danube.eu/energy-barge)



# Interreg



EUROPEAN UNION

## Danube Transnational Programme

### ENERGY BARGE

### Building a Green Energy & Logistics Belt

ENERGY BARGE is co-funded

by the European Regional Development Fund (ERDF)

If you are interested to receive the ENERGY BARGE newsletter regularly, please subscribe on our project website: [www.interreg-danube.eu/energy-barge](http://www.interreg-danube.eu/energy-barge)