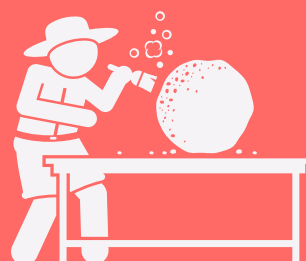


WHAT IS A LOCAL ARCHEO PLAN?



The Local Archeo Plan will help you develop an **archaeological park** from an archaeological site in your local environment.



The planning process will guide you through the assessment of your local archaeological heritage, the feasibility study and will help you develop activities aimed at **enhancement** of your site.



At the start of the planning process, you should define your **vision** on how your site will look like in the next 10 or 20 years.



The vision for your archaeological site will be achieved through realistic and measurable **objectives**.



Which are your objectives? (some examples)

- Developing new archaeological presentations (displays of archaeological remains)
- Increased visitor satisfaction
- Safeguarding archaeological values and other cultural values
- Conservation of the (displayed) archaeological remains
- Cooperation with the local community
- Improving the knowledge about the archaeological site in the local community
- Promotion of the site to national or international tourists
- Improving accessibility of the site

