

Arad (Radna) – Deva Pilot Area in Romania

Cristian-Remus Papp
WWF DCP-Romania
Project Manager

Vienna, 28 Feb 2017

Project co-funded by the European Regional Development Fund (ERDF).

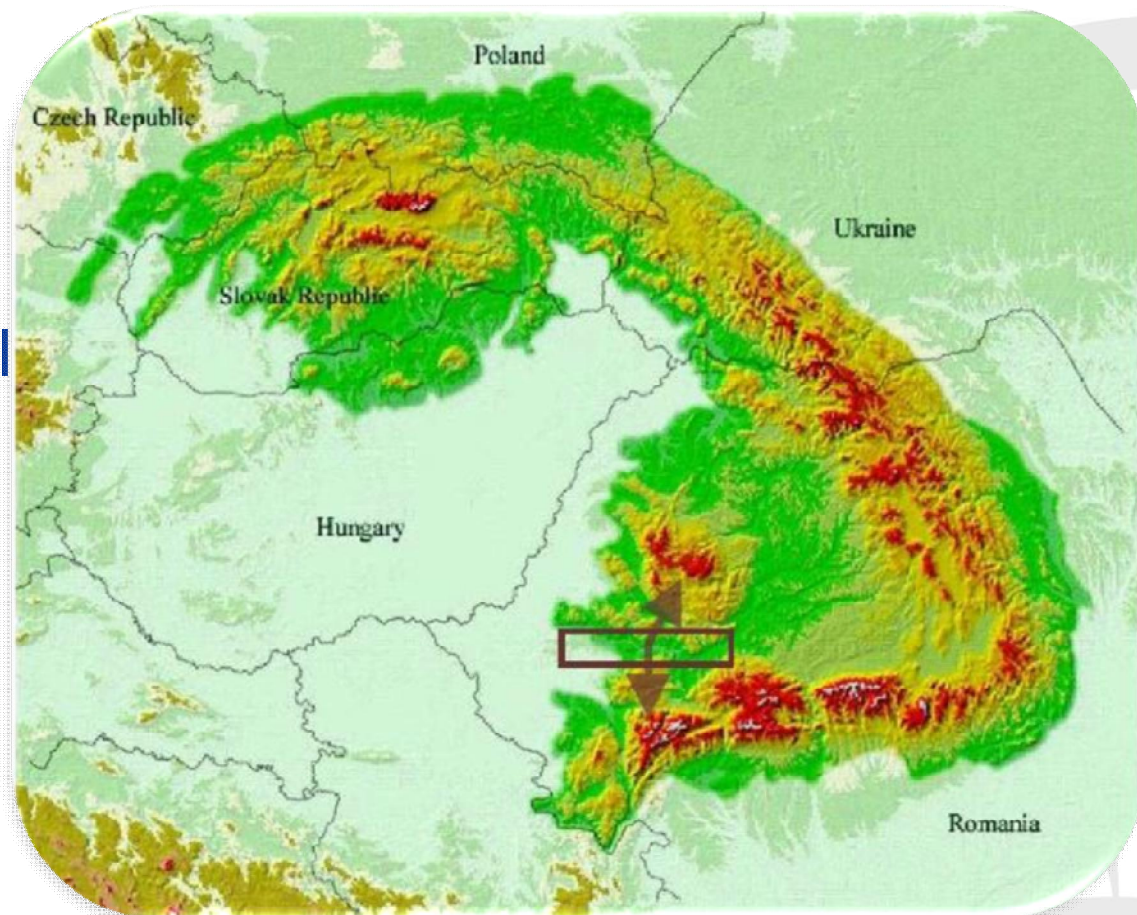
www.interreg-danube.eu/transgreen



Arad (Radna) – Deva Pilot Area

Focus area

Mures Valley – a critical
connectivity area



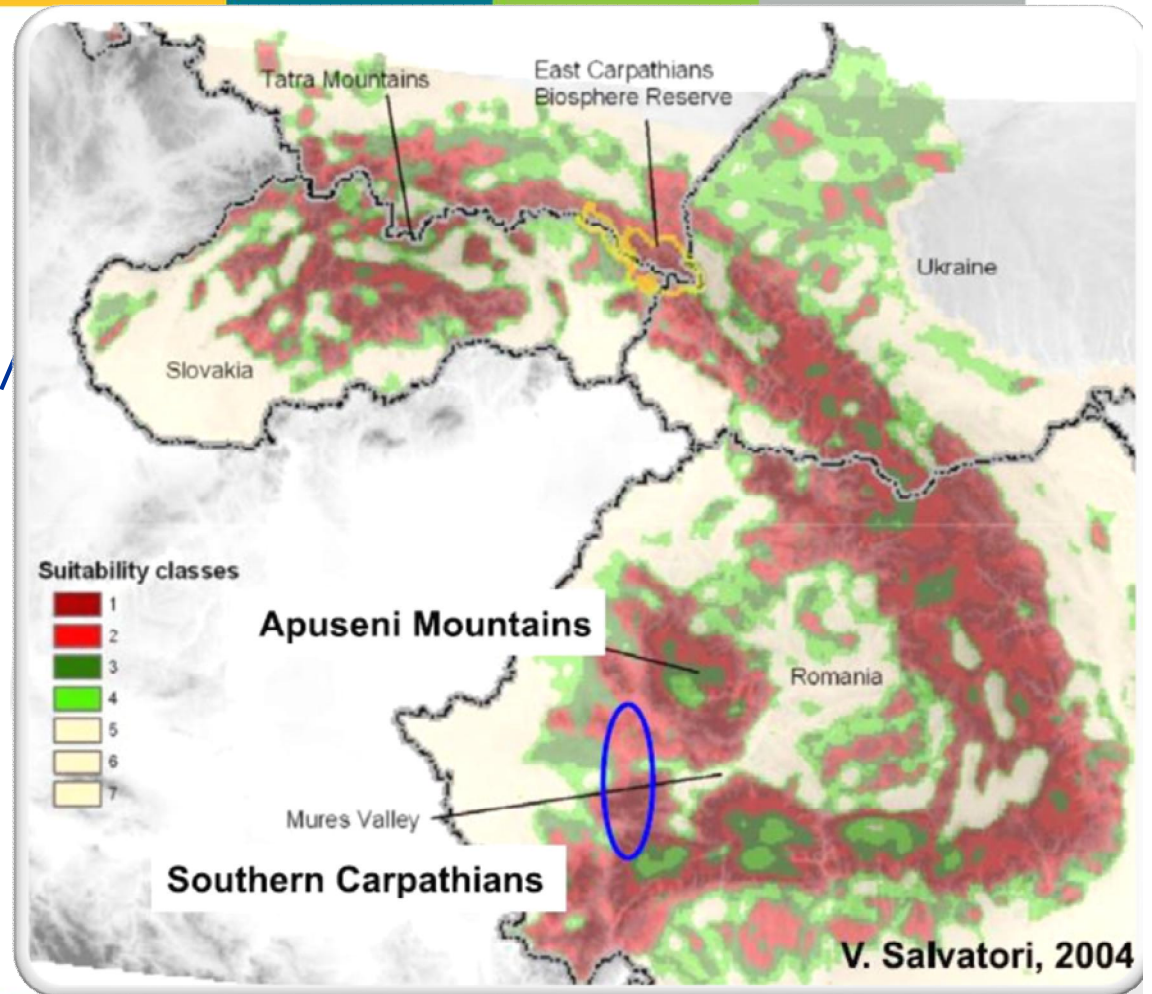
Project co-funded by the European Regional Development Fund (ERDF).

www.interreg-danube.eu/transgreen

Arad (Radna) – Deva Pilot Area

Significance

One of the most critical/
important ecological
corridor in the
Carpathians



Project co-funded by the European Regional Development Fund (ERDF).

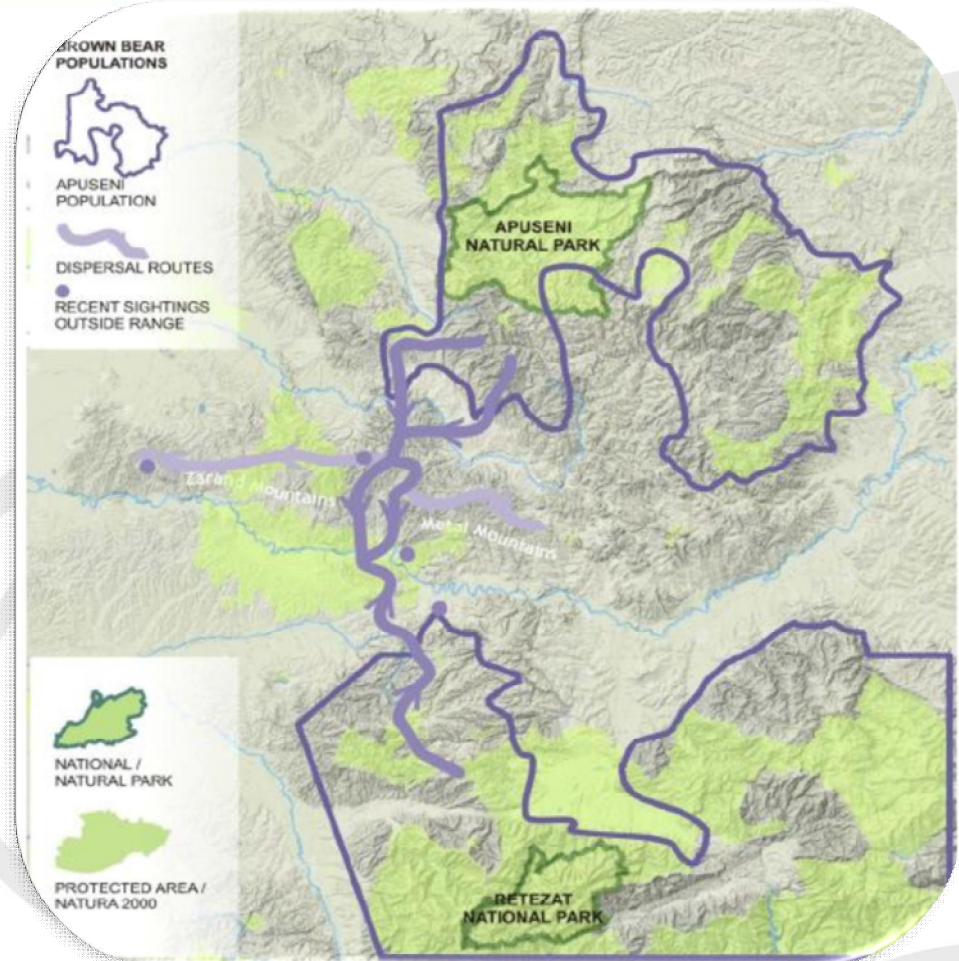
www.interreg-danube.eu/transgreen

Carpathian Mountains

Arad (Radna) – Deva Pilot Area

Significance

The last functional corridor
for an isolated bear
population



Project co-funded by the European Regional Development Fund (ERDF).

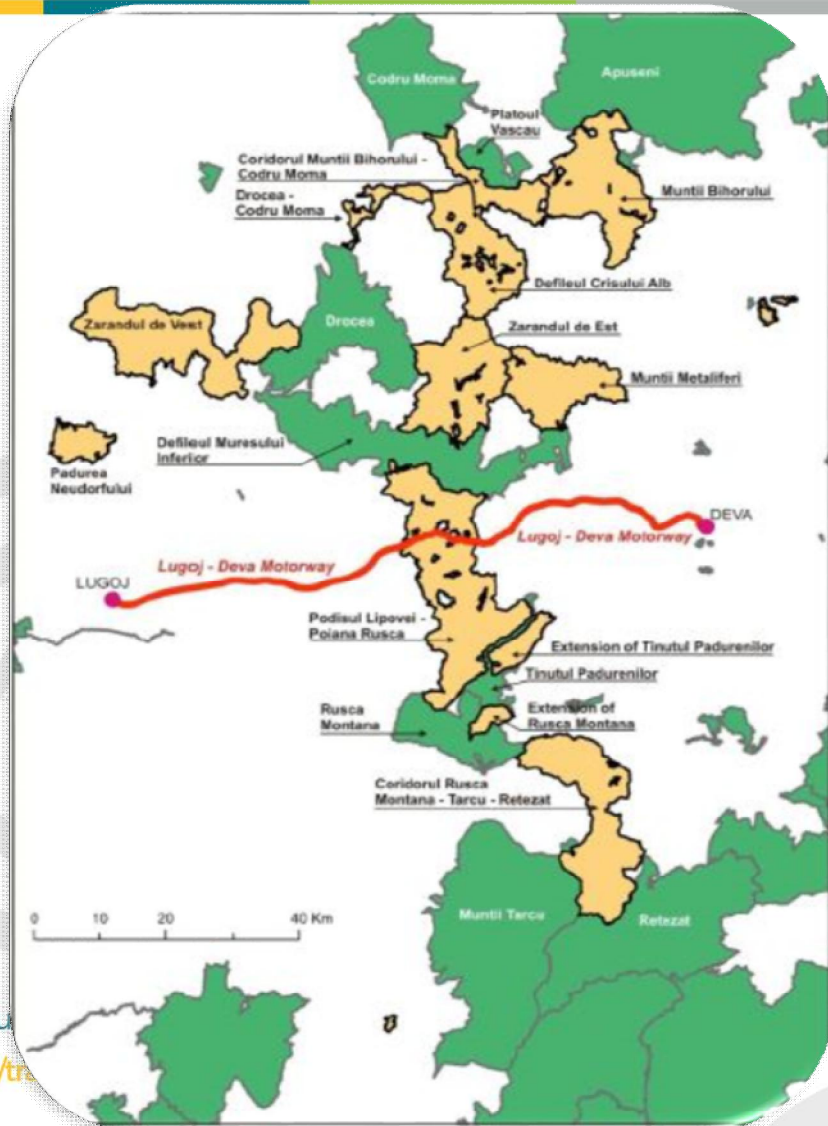
www.interreg-danube.eu/transgreen

Arad (Radna) – Deva Pilot Area

Previous work

The first N2k sites designated to create a regional network of corridors in Romania

The first major threat – the Lugoj-Deva motorway

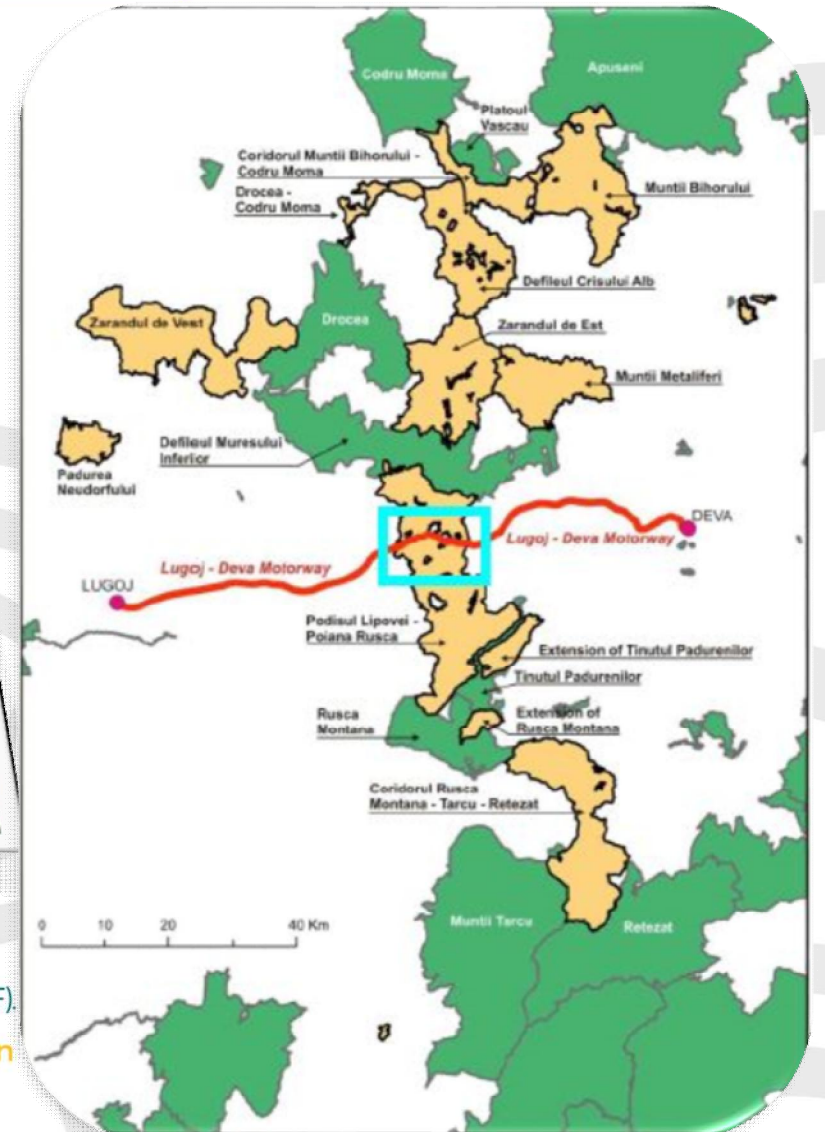
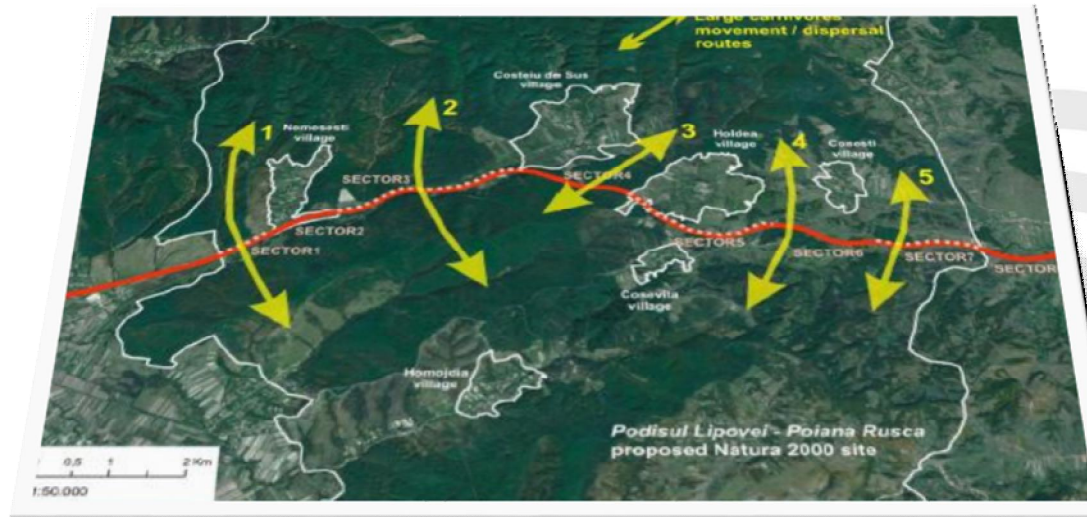






Arad (Radna) – Deva Pilot Area

Successful mitigation measures for Lugoj-Deva motorway (2010 – 2016)



Project co-funded by the European Regional Development Fund (ERDF).

www.interreg-danube.eu/transgreen

Arad (Radna) – Deva Pilot Area

Current challenge

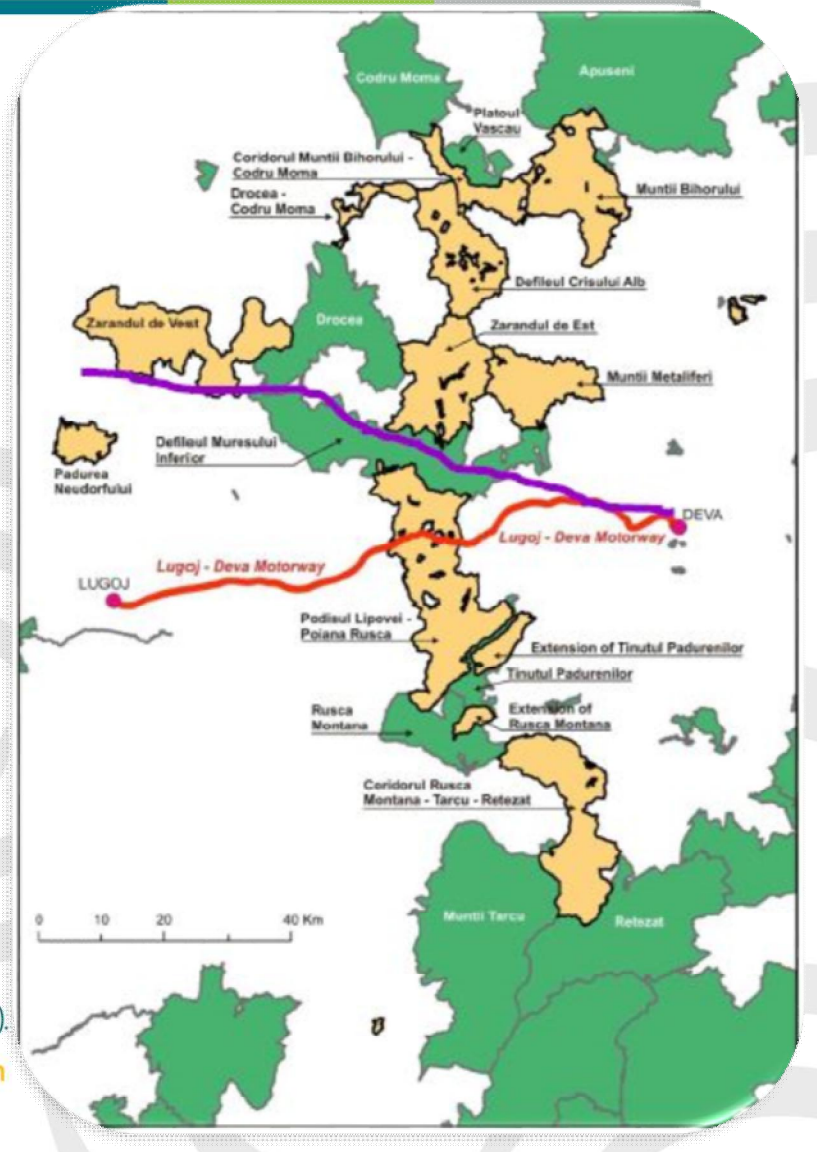
Development of regional
species action plan – brown
bear and wolf

(EU Life+ Connect Carpathians
of FFI & Zarand

Mitigation of Arad (Radna) –
Deva railway (TransGreen)

Project co-funded by the European Regional Development Fund (ERDF).

www.interreg-danube.eu/transgreen



Action Plan

1. Perform expert studies in the field
for collecting and analyzing biodiversity
related data

*1.1 Identification of
critical connectivity areas
(micro-corridors /
potential movement's
routes for large &
medium-size mammal
species)*



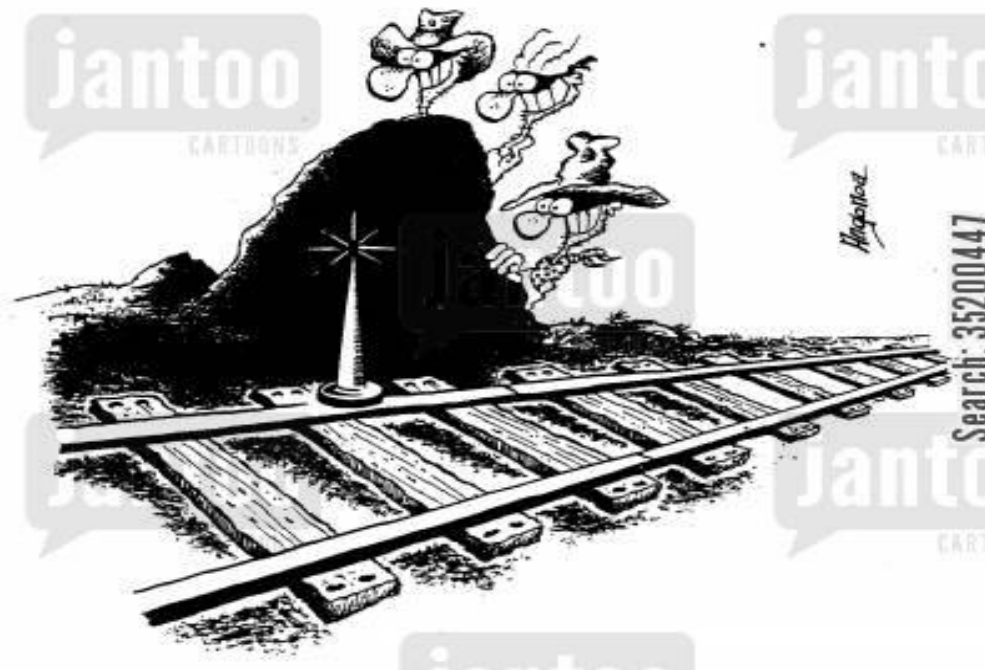
1. Perform expert studies in the field
for collecting and analyzing biodiversity
related data



"We met in a railway station ..."

*1.2. Analysis of the
potential impacts of the
planned railway
expansion project on the
functionality of the critical
connectivity areas*

1. Perform expert studies in the field
for collecting and analyzing biodiversity
related data



1.3 In the case of negative impacts, develop a set of mitigation measures to reduce the impact of the railway and the cumulative impacts in the area.

1. Perform expert studies in the field
for collecting and analyzing biodiversity
related data

*1.4 Present, discuss and
adapt the solutions after
engagement with experts
and stakeholders, in a
participative way*



1. Perform expert studies in the field
for collecting and analyzing biodiversity
related data



*1.5 Use the pilot area to
develop a set of
recommendations on
integrated
environmentally friendly
railway transport
infrastructure
development*

2. Organize local project meetings and cooperate with key national and local stakeholders



2.1 Organize 2 local kick-off meetings + other meetings as needed with stakeholders

2. Organize local project meetings and cooperate with key national and local stakeholders



2.2 Engage with the relevant stakeholders on the topic of proper planning of infrastructure in the pilot area.

3. Testing the road kills registration software of the Project



**"WHAT GOES BETTER WITH
ROAD KILL...RED OR WHITE?"**

3.1 Contribute to the development and adaptation of the KDE+ road kills software to the local needs of Lugoj-Deva pilot area

Thank you for your attention!

Cristian-Remus Papp, cpapp@wwfdcp.ro
004 0745 891 929

Project co-funded by the European Regional Development Fund (ERDF).

www.interreg-danube.eu/transgreen

